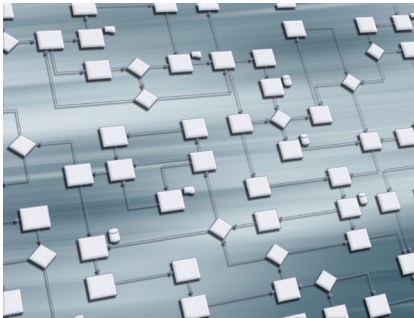




The New Standard in Enterprise Content Management

SpringCM Innovation

# ADVANCED WORKFLOW



## SPRINGCM FEATURES

SpringCM develops enterprise-class content management software delivered as an on-demand service with fully integrated capture, document management, workflow and business process automation technologies.

With on-demand delivery, SpringCM can have you up-and-running in less than a day. For businesses of all sizes, SpringCM helps accelerate revenue, decrease costs and avoid penalties by automating document-centric processes.

## INDUSTRY LEADERS USING SPRINGCM



## MORE INFORMATION

[www.springcm.com](http://www.springcm.com)

Toll Free 877.362.7273

[sales@springcm.com](mailto:sales@springcm.com)

## Advanced Workflow: The SpringCM BPM Solution

Every professional who has implemented or participated in business processes knows that exceptions are inevitable. Allowing for such exceptions within a business process isn't just challenging, it's imperative.

Yet accounting for all possible exceptions results in a process that's so complex it's no longer manageable — the process, not the lack thereof, becomes the burden. The added manual steps are time-consuming and divert your team members' attention from their actual jobs. Although this challenge was a catch-22 for years, the advancement of business-related technology has produced an affordable solution to deliver business process management (BPM) benefits including:

- Cost reduction due to elimination of time-consuming manual processes
- Competitive advantage through reduced operational expenses
- Quicker time-to-revenue thanks to faster processing cycles
- Increased accuracy through reduction or elimination of processing errors
- Improved operational metrics through visibility into operational steps

## The SpringCM Advanced Workflow Solution

The SpringCM Advanced Workflow solution is designed to automate any complex business process regardless of the type of industry or the number of steps involved.

The complexity of life insurance creation, for example, is an ideal candidate for Advanced Workflow. Rather than forcing an underwriter to collect all the FICO scores, medical records, employment verification and other material required for every applicant, Advanced Workflow can alert the underwriter when all necessary material is available and even gather material from other team members or Web services. If a FICO score falls below a normal range or medical records indicate health risks, Advanced Workflow will automatically route these concerns to the appropriate parties before the underwriter has even looked at them.

Advanced Workflow could just as easily flag a discrepancy in shipping addresses between an invoice and mailing address and route it to the appropriate team members before the AP clerk checks the account. An incomplete I-9 doesn't delay a new hire's on boarding process; it simply allows Advanced Workflow to alert the HR representative that appropriate action is required. No process

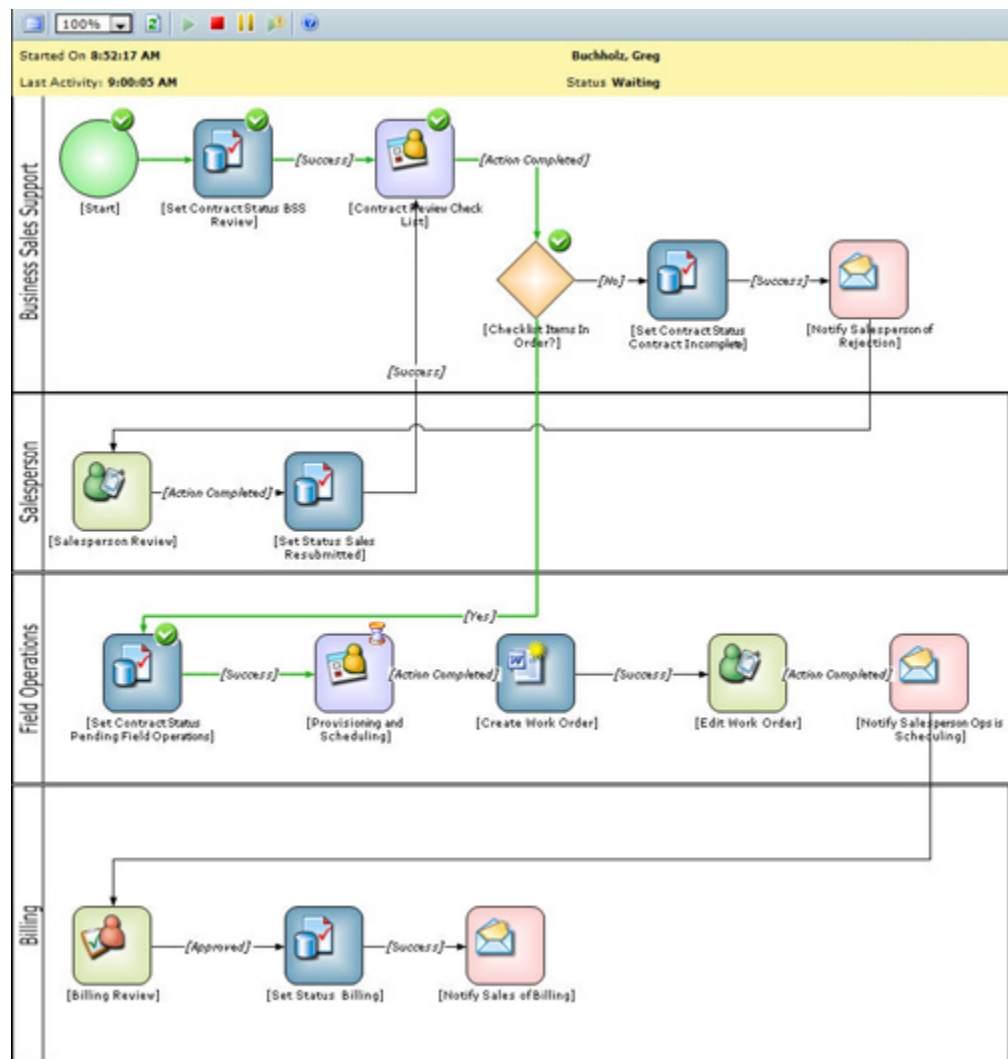
# Advanced Workflow: The SpringCM BPM Solution

is too complex and no exception is too intricate for Advanced Workflow to automate.

## Why SpringCM for BPM?

On-premises BPM solutions — those that aren't Web-based like SpringCM's Advanced Workflow — can offer the same functionality and reporting as Advanced Workflow but will also include a few extras that Advanced Workflow doesn't: high startup cost, painstaking deployment and a delayed return on investment (ROI). The total cost and time involved in software and hardware installation means that your business process will take months to deploy and substantial funds to implement. And the longer you're waiting to initiate your BPM solution, the longer you're waiting to see a ROI.

Advanced Workflow eliminates the software and hardware installation. It is fully available via your preferred Web browser (like Internet Explorer or Firefox) anywhere you have Internet access. Our professional services team is completely focused on understanding — and often revealing — your business process, meaning time is spent building Advanced Workflow, not determining how many computers will need software installed or how many servers are necessary to run your BPM solution. And rapid deployment, depending upon your needs, is a matter of



**SpringCM's Advanced Workflow outlines the entire business process, completely accounts for all variables and automates every step.**

days or weeks, not months.

Whether your BPM solution is designed for five or 500 users, Advanced Workflow can automate processes more effectively and efficiently than any other BPM provider.



350 N. Orleans Street, Suite 950  
Chicago, IL 60654  
www.springcm.com  
312.881.2026